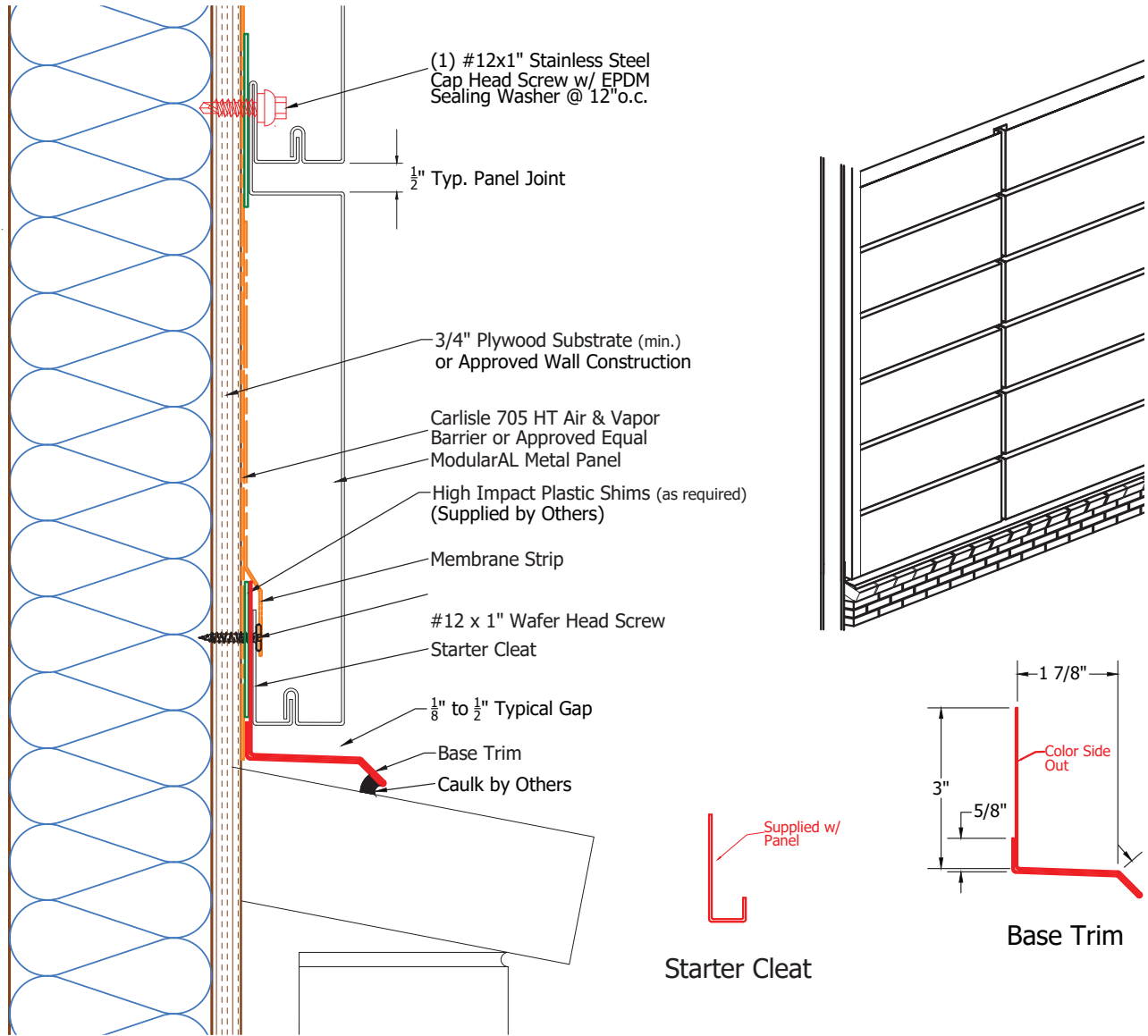


NOTES:

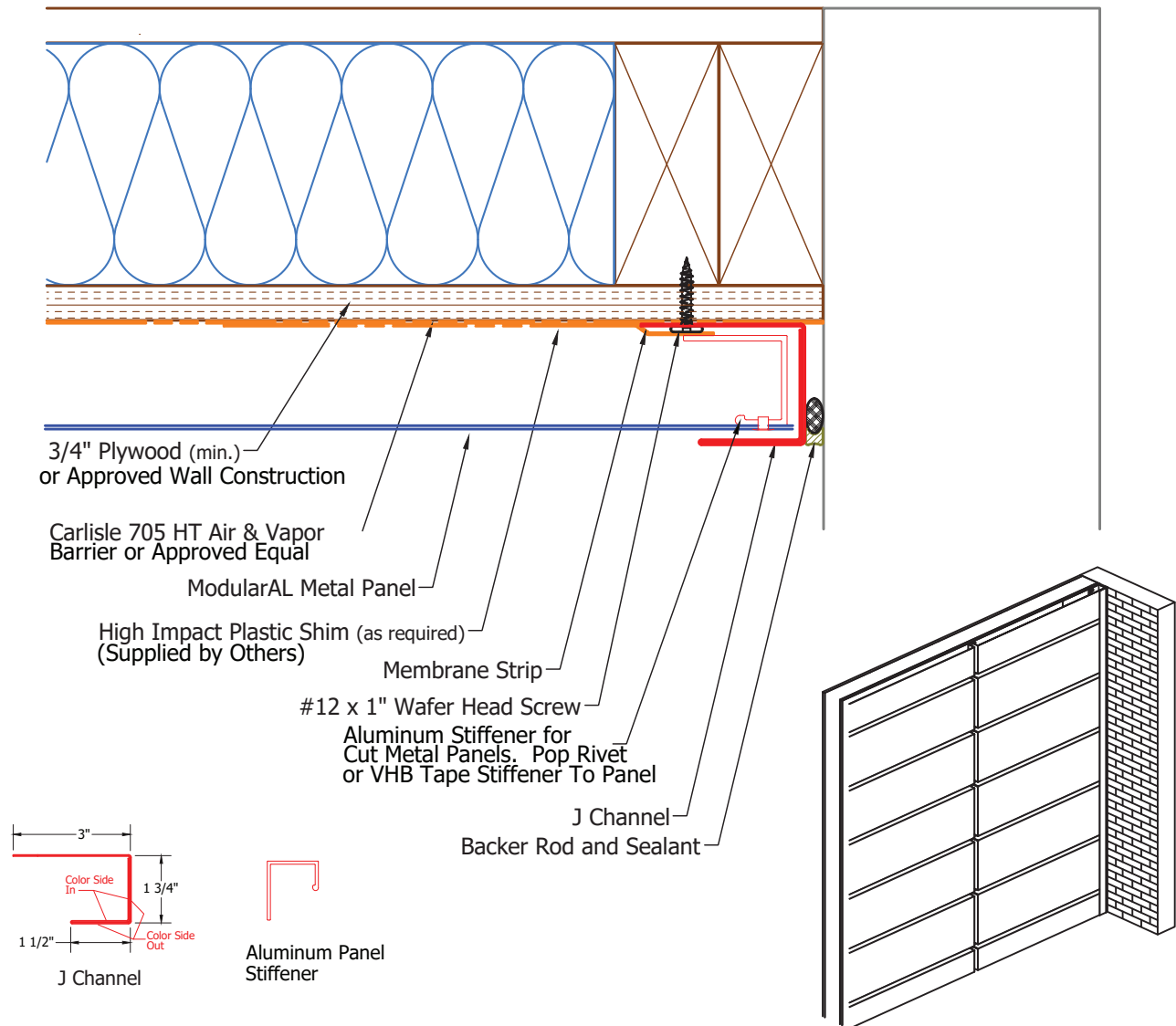
- Shims Are Not Required For Metal Panel Unless There Are Imperfections In Wall Construction.
- If Imperfections, Use High Impact Plastic Shims.
- (Standard Wall Construction Deviation is Less Than 1/4" In 20'-0" In All Directions).



JOB NAME	NOTES
DATE	
CONTRACTOR	

NOTES:

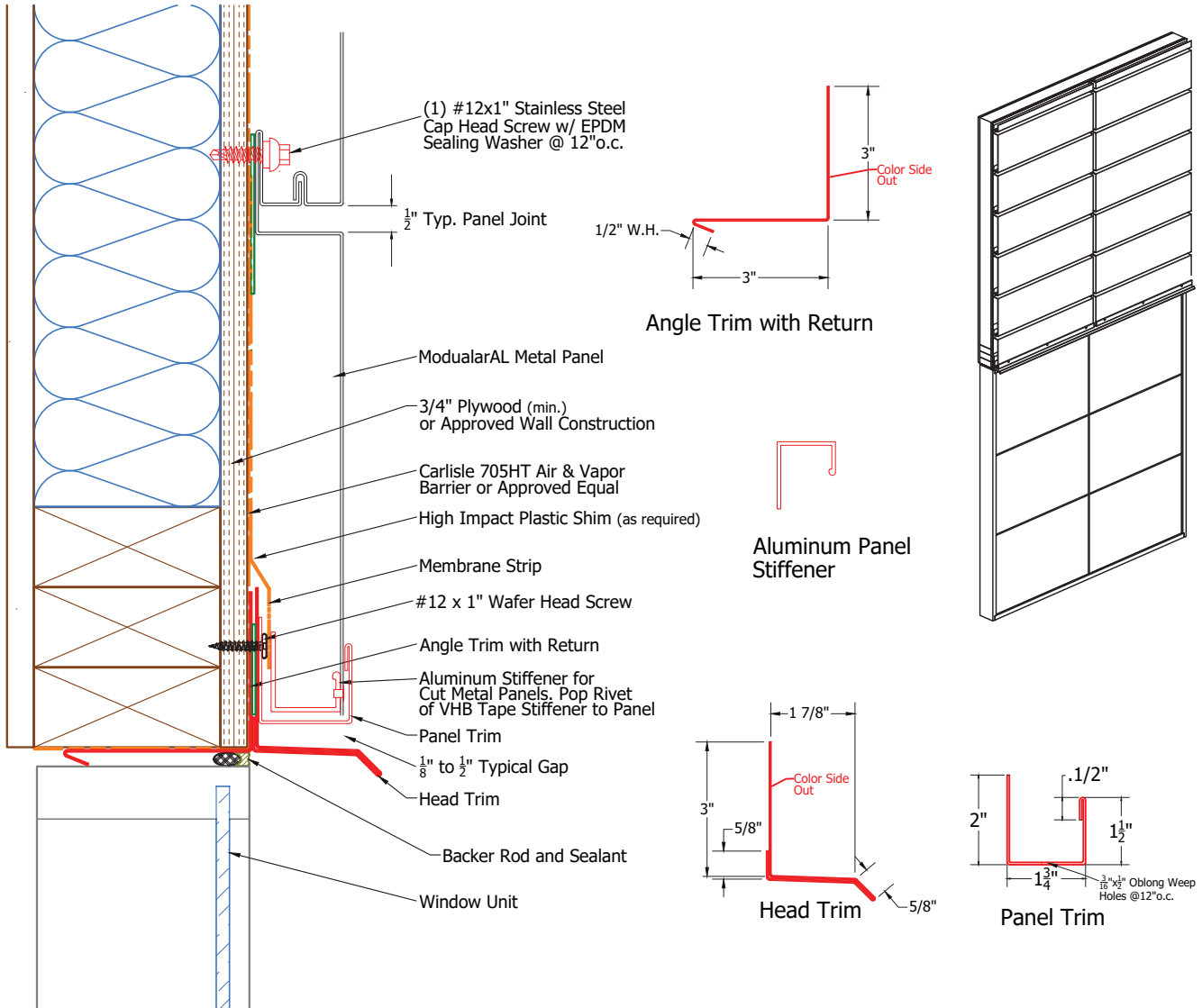
- Shims Are Not Required For Metal Panel Unless There Are Imperfections In Wall Construction.
- If Imperfections, Use High Impact Plastic Shims.
- (Standard Wall Construction Deviation is Less Than 1/4" In 20'-0" In All Directions).



JOB NAME	NOTES
DATE	
CONTRACTOR	

NOTES:

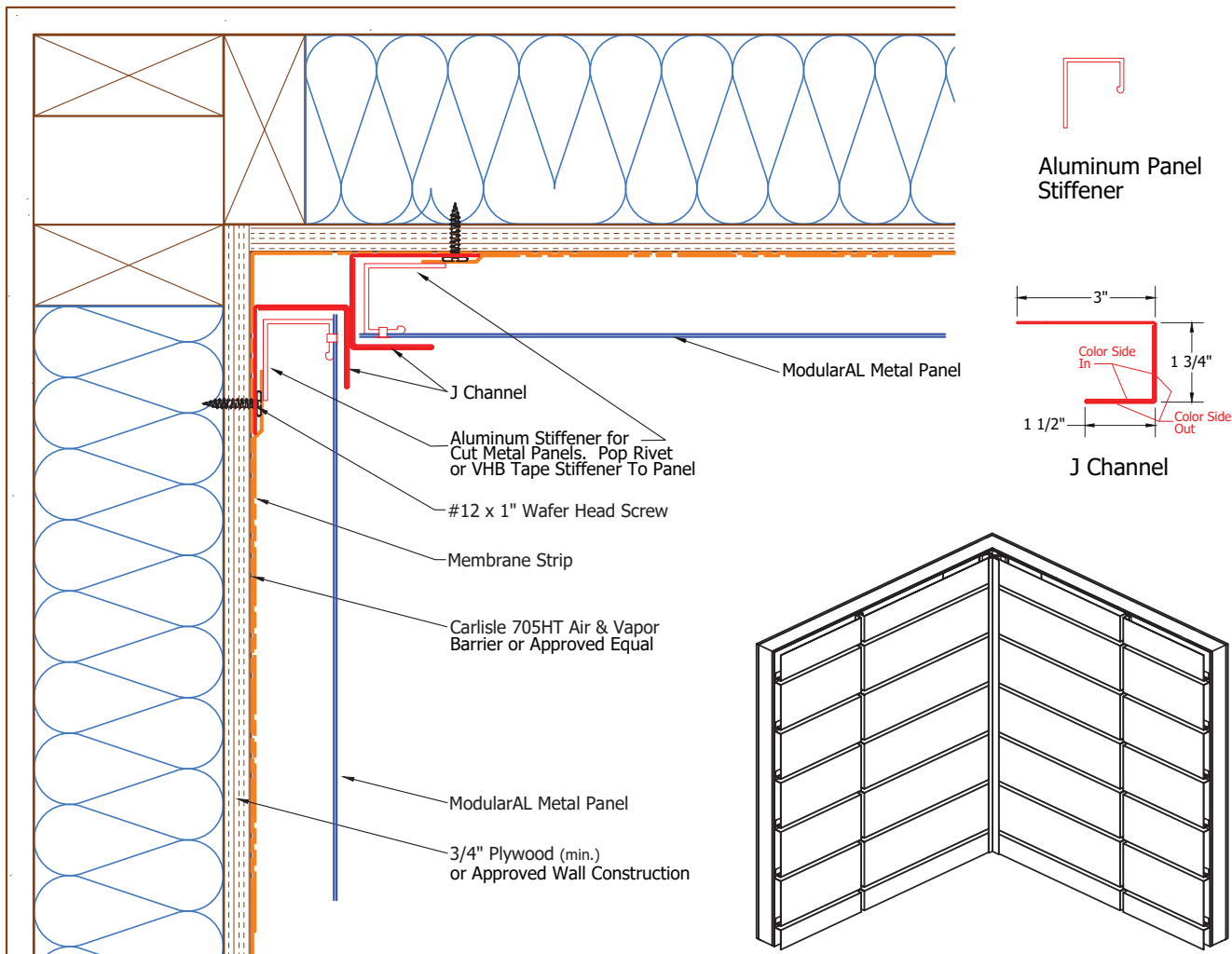
- Shims Are Not Required For Metal Panel Unless There Are Imperfections In Wall Construction.
- If Imperfections, Use High Impact Plastic Shims.
- (Standard Wall Construction Deviation is Less Than 1/4" In 20'-0" In All Directions).



JOB NAME	NOTES
DATE	
CONTRACTOR	

NOTES:

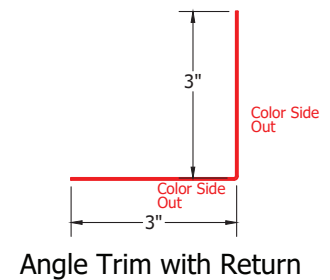
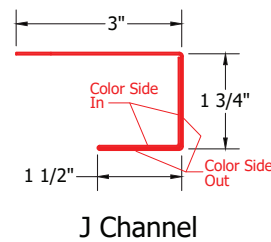
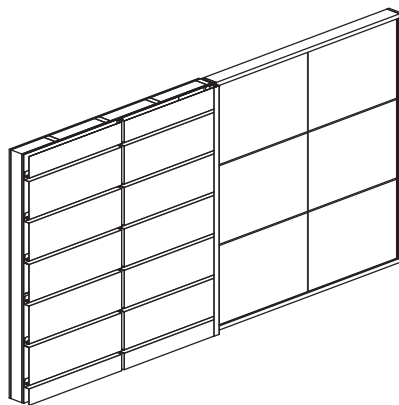
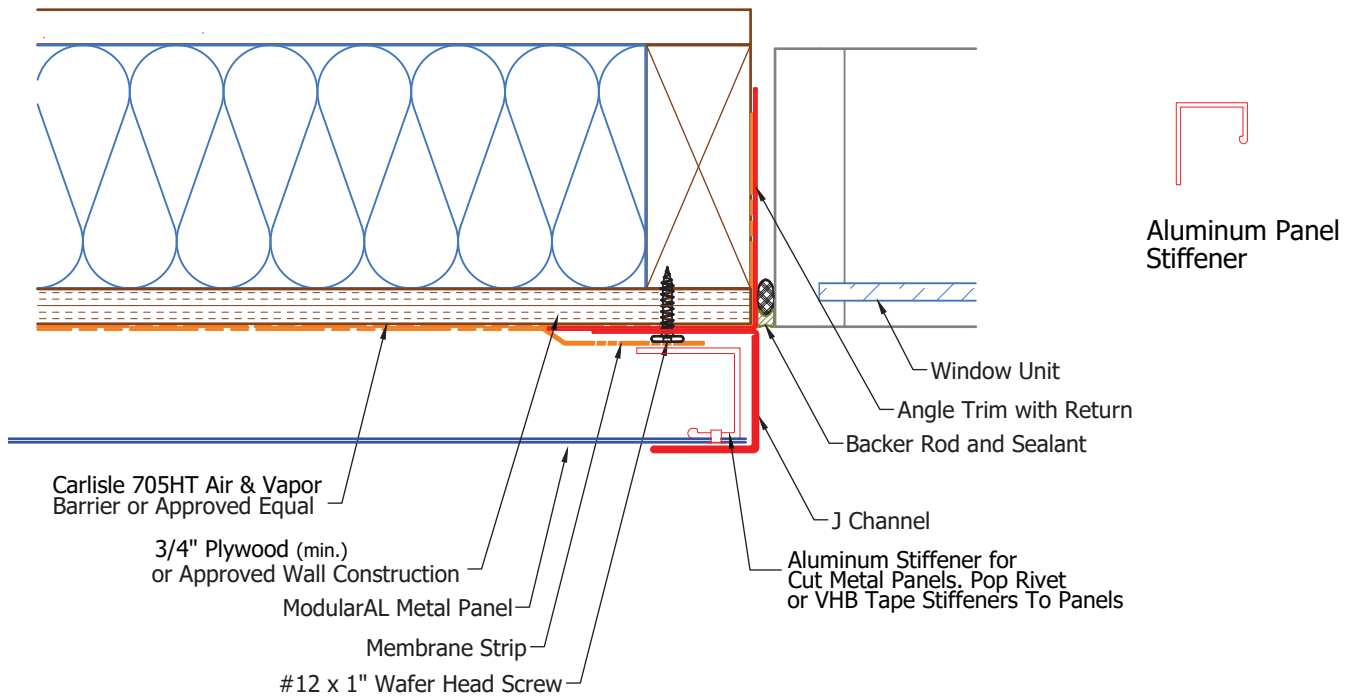
- Shims Are Not Required For Metal Panel Unless There Are Imperfections In Wall Construction.
- If Imperfections, Use High Impact Plastic Shims.
- (Standard Wall Construction Deviation is Less Than 1/4" In 20'-0" In All Directions).



JOB NAME	NOTES
DATE	
CONTRACTOR	

NOTES:

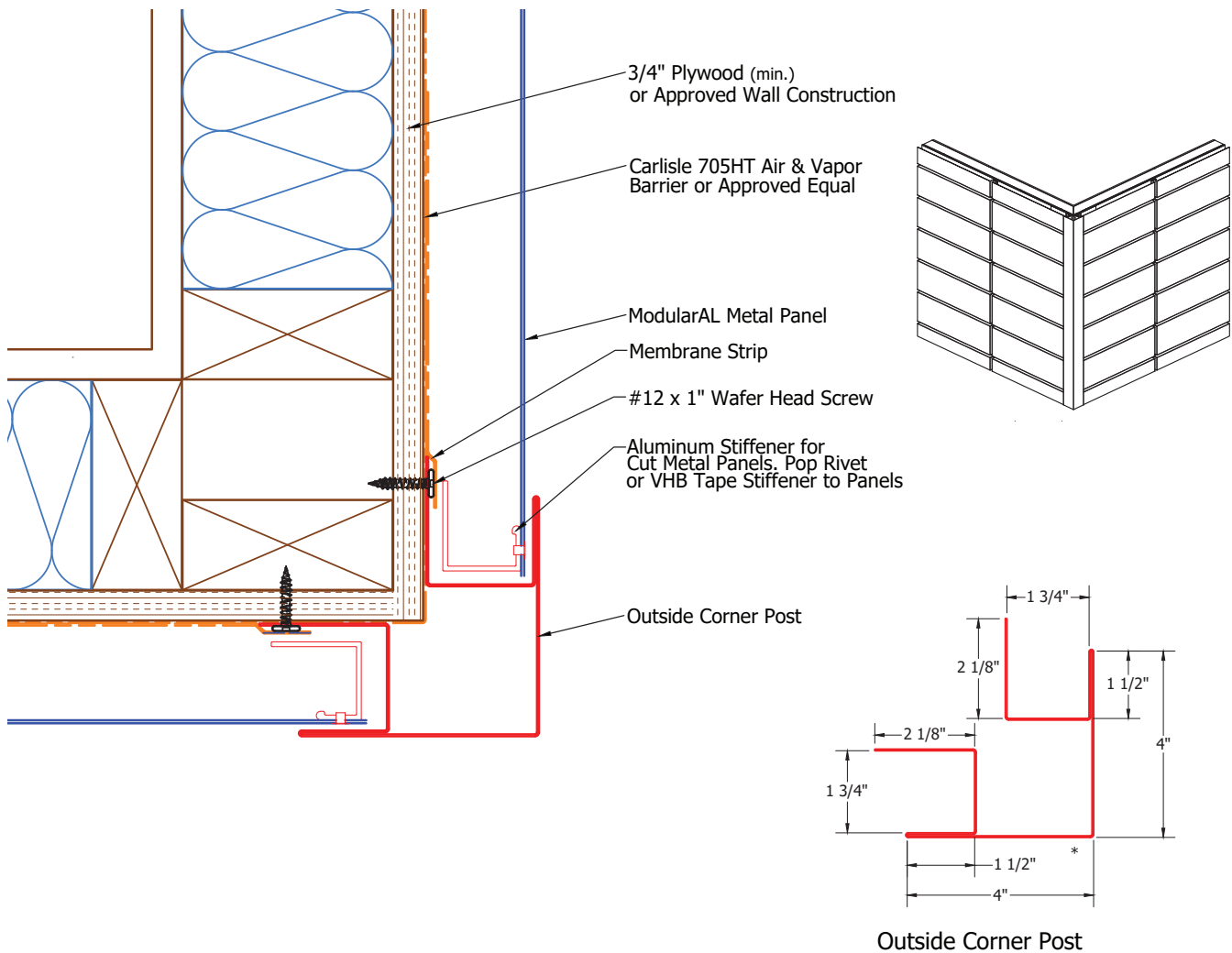
- Shims Are Not Required For Metal Panel Unless There Are Imperfections In Wall Construction.
- If Imperfections, Use High Impact Plastic Shims.
- (Standard Wall Construction Deviation is Less Than 1/4" In 20'-0" In All Directions).



JOB NAME	NOTES
DATE	
CONTRACTOR	

NOTES:

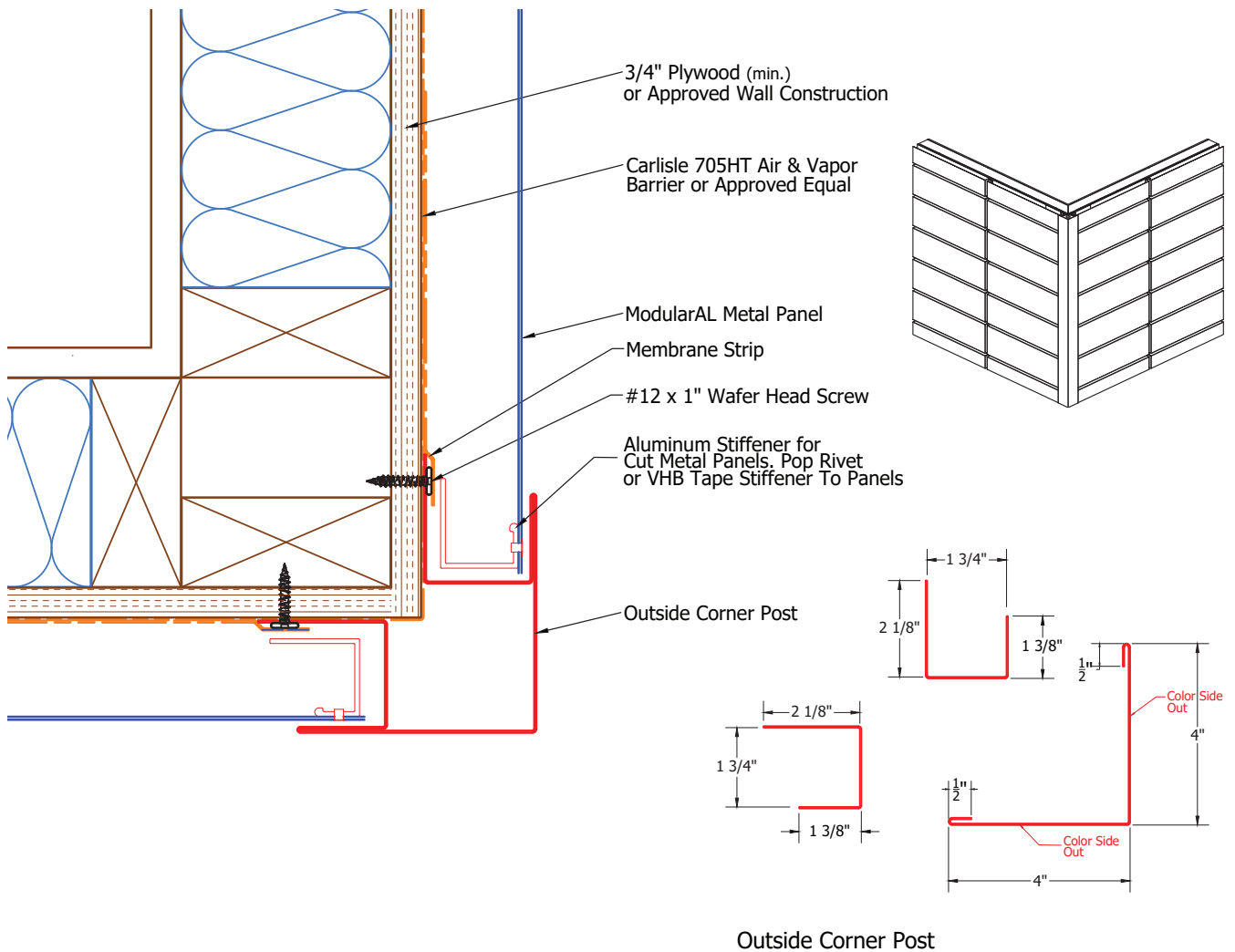
- Shims Are Not Required For Metal Panel Unless There Are Imperfections In Wall Construction.
- If Imperfections, Use High Impact Plastic Shims.
- (Standard Wall Construction Deviation is Less Than 1/4" In 20'-0" In All Directions).



JOB NAME	NOTES
DATE	
CONTRACTOR	

NOTES:

- Shims Are Not Required For Metal Panel Unless There Are Imperfections In Wall Construction.
- If Imperfections, Use High Impact Plastic Shims.
- (Standard Wall Construction Deviation is Less Than 1/4" In 20'-0" In All Directions).

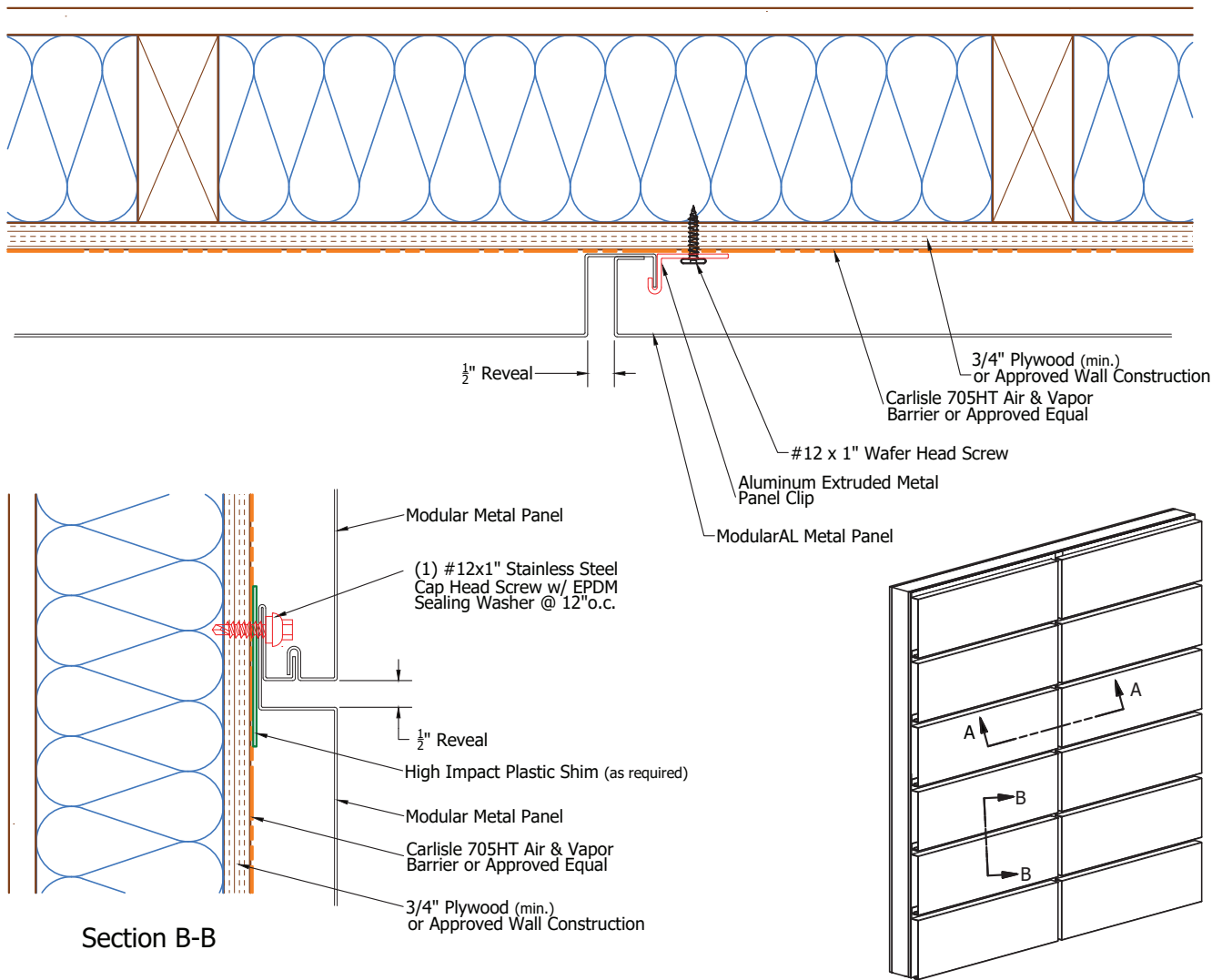


JOB NAME	NOTES
DATE	
CONTRACTOR	

NOTES:

- Shims Are Not Required For Metal Panel Unless There Are Imperfections In Wall Construction.
- If Imperfections, Use High Impact Plastic Shims.
- (Standard Wall Construction Deviation is Less Than 1/4" In 20'-0" In All Directions).

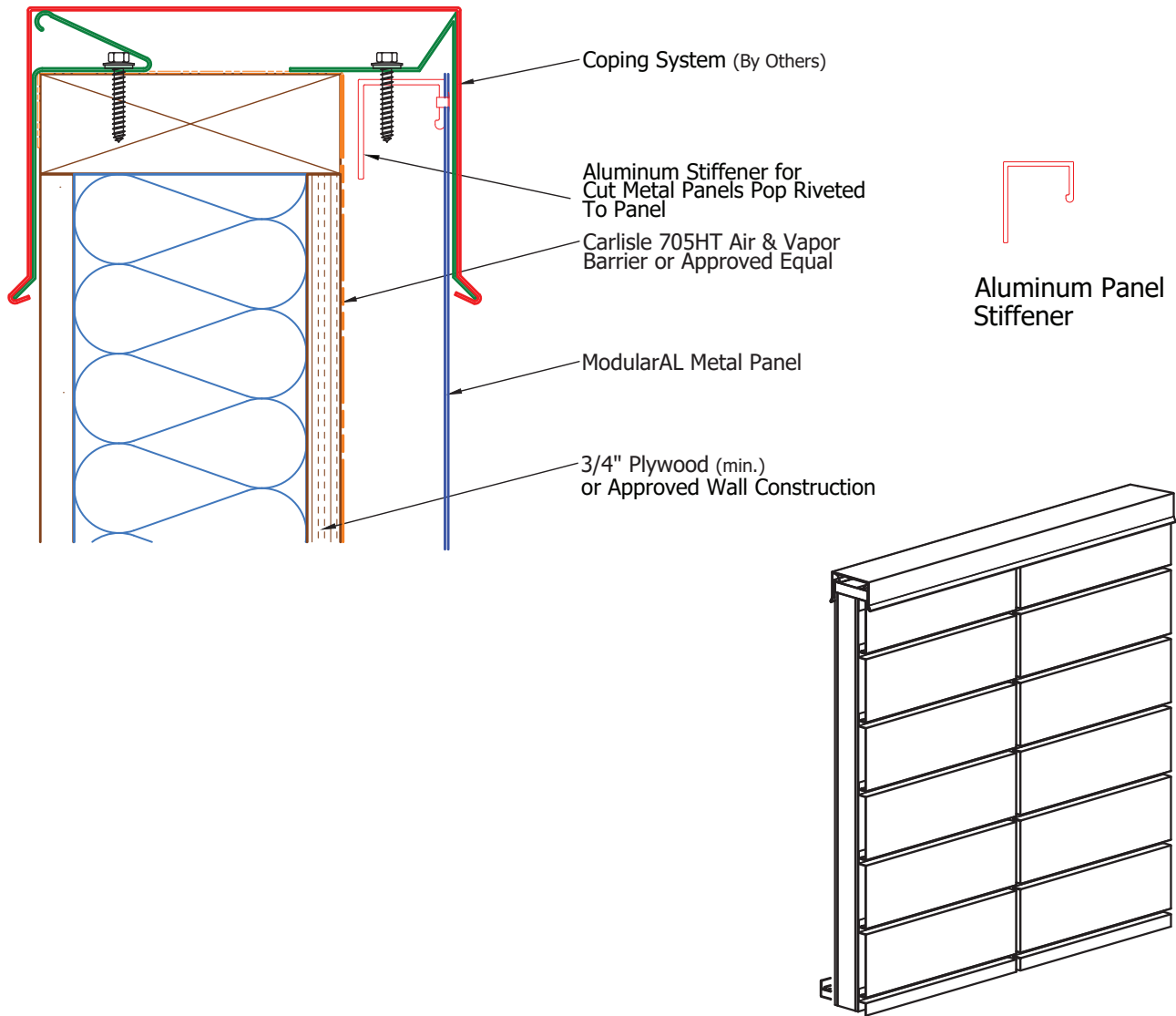
Section A-A



JOB NAME	NOTES
DATE	
CONTRACTOR	

NOTES:

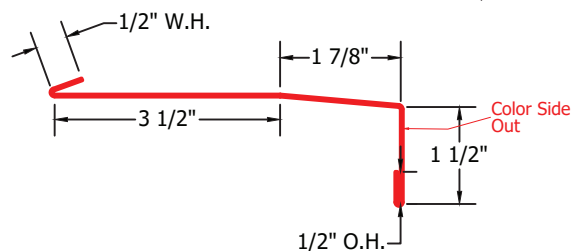
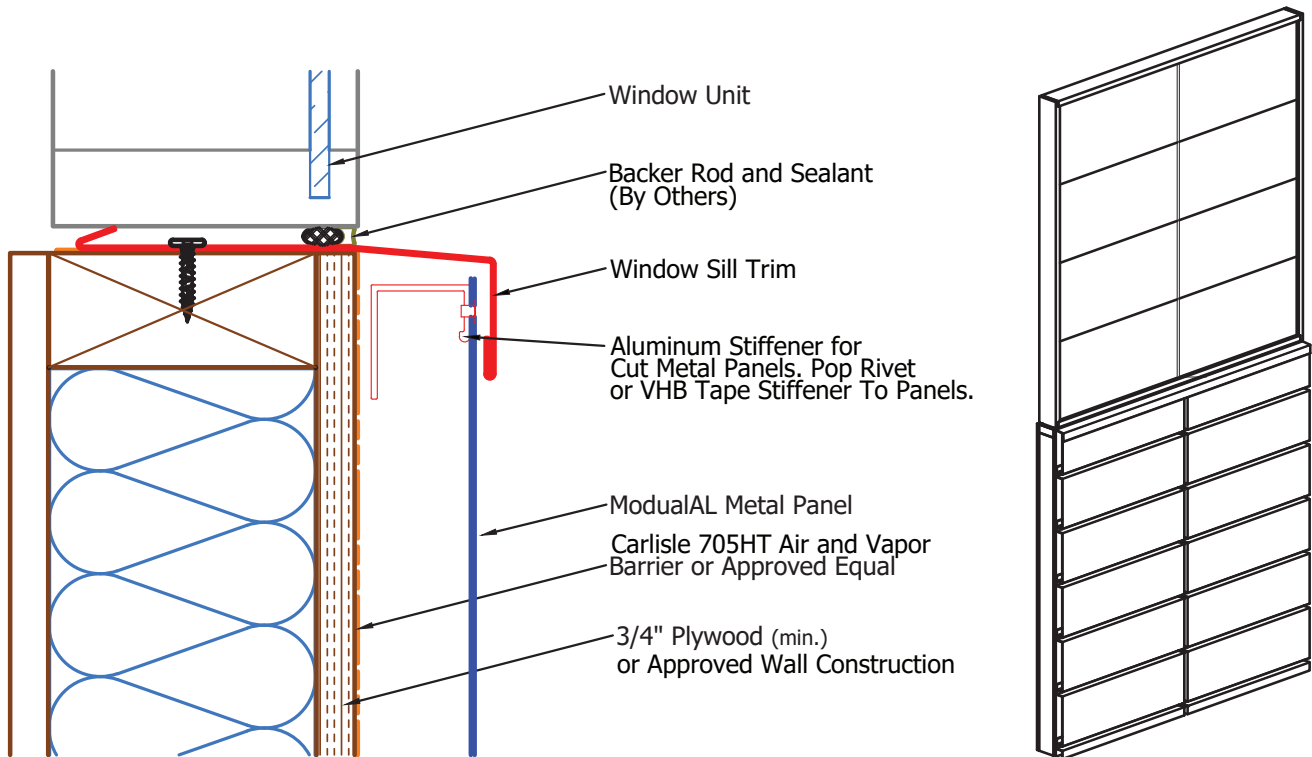
- Shims Are Not Required For Metal Panel Unless There Are Imperfections In Wall Construction.
- If Imperfections, Use High Impact Plastic Shims.
- (Standard Wall Construction Deviation is Less Than 1/4" In 20'-0" In All Directions).



JOB NAME	NOTES
DATE	
CONTRACTOR	

NOTES:

- Shims Are Not Required For Metal Panel Unless There Are Imperfections In Wall Construction.
- If Imperfections, Use High Impact Plastic Shims.
- (Standard Wall Construction Deviation is Less Than 1/4" In 20'-0" In All Directions).



Window Sill Trim

JOB NAME	NOTES
DATE	
CONTRACTOR	